

Light efficiency:

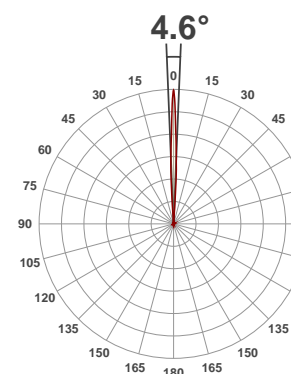
5 Lumen/Watt

Light quality:

CRI: 0.0

Color temperature:

0 K



Product name:

Chorus Line16

Test:

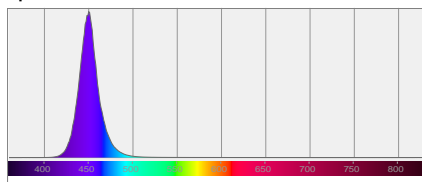
Zoom In Blue

Date:

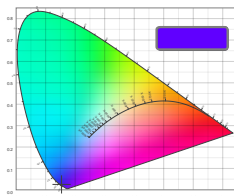
7/20/2017

Output: 1043 lm Power consumption: 197 W Peak: 52145 cd

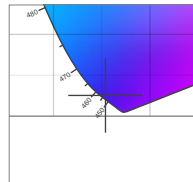
Spectral distribution



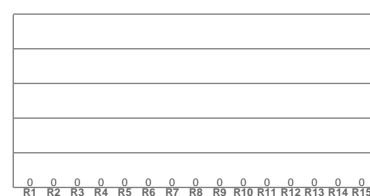
Color coordinates



Zoom color point

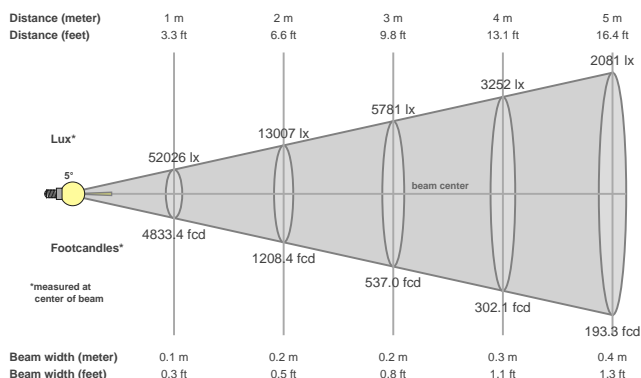


CRI R values



Color temperature	Color rendering index	Red component	Color fidelity	Color gamut	Color quality scale	Color coordinate cie 1931	Color coordinate cie 1931	Color coordinate	Color coordinate	Color divition from black body
CCT	CRI	CRI R9	TM30 Rf	TM30 Rg	CQS	x	y	u	v	Δuv
0 K	0.0	0.0	0.0	0.0	0.0	0.154	0.025	0.205	0.051	n/a

Beam details



Beam angels

Beam angle 50%	Field angle 10%	Cutoff angle 2,5%
4.6°	8°	8.8°

Beam intensities

Peak intensity	Int. ratio in 120° cone	Int. ratio in 90° cone
52145 cd	50.9%	44.6%

Power

Power	Power factor	Power frequency
197 W	0.99	60.1 Hz

Nominal voltage	Voltage	Current
230 V	113 V	1.77 A

Beam intensities from 1-20m

1m	2m	3m	4m	5m	6m	7m	8m	9m	10m	11m	12m	13m	14m	15m	16m	17m	18m	19m	20m
3.3ft	6.6ft	9.8ft	13.1ft	16.4ft	19.7ft	23ft	26.2ft	29.5ft	32.8ft	36.1ft	39.4ft	42.7ft	45.9ft	49.2ft	52.5ft	55.8ft	59.1ft	62.3ft	65.6ft
52026lx	13007lx	5781lx	3252lx	2081lx	1445lx	1062lx	813lx	642lx	520lx	430lx	361lx	308lx	265lx	231lx	203lx	180lx	161lx	144lx	130lx
4833.4fcd	1208.4fcd	537fcd	302.1fcd	193.3fcd	134.3fcd	98.6fcd	75.5fcd	59.7fcd	48.3fcd	39.9fcd	33.6fcd	28.6fcd	24.7fcd	21.5fcd	18.9fcd	16.7fcd	14.9fcd	13.4fcd	12.1fcd